

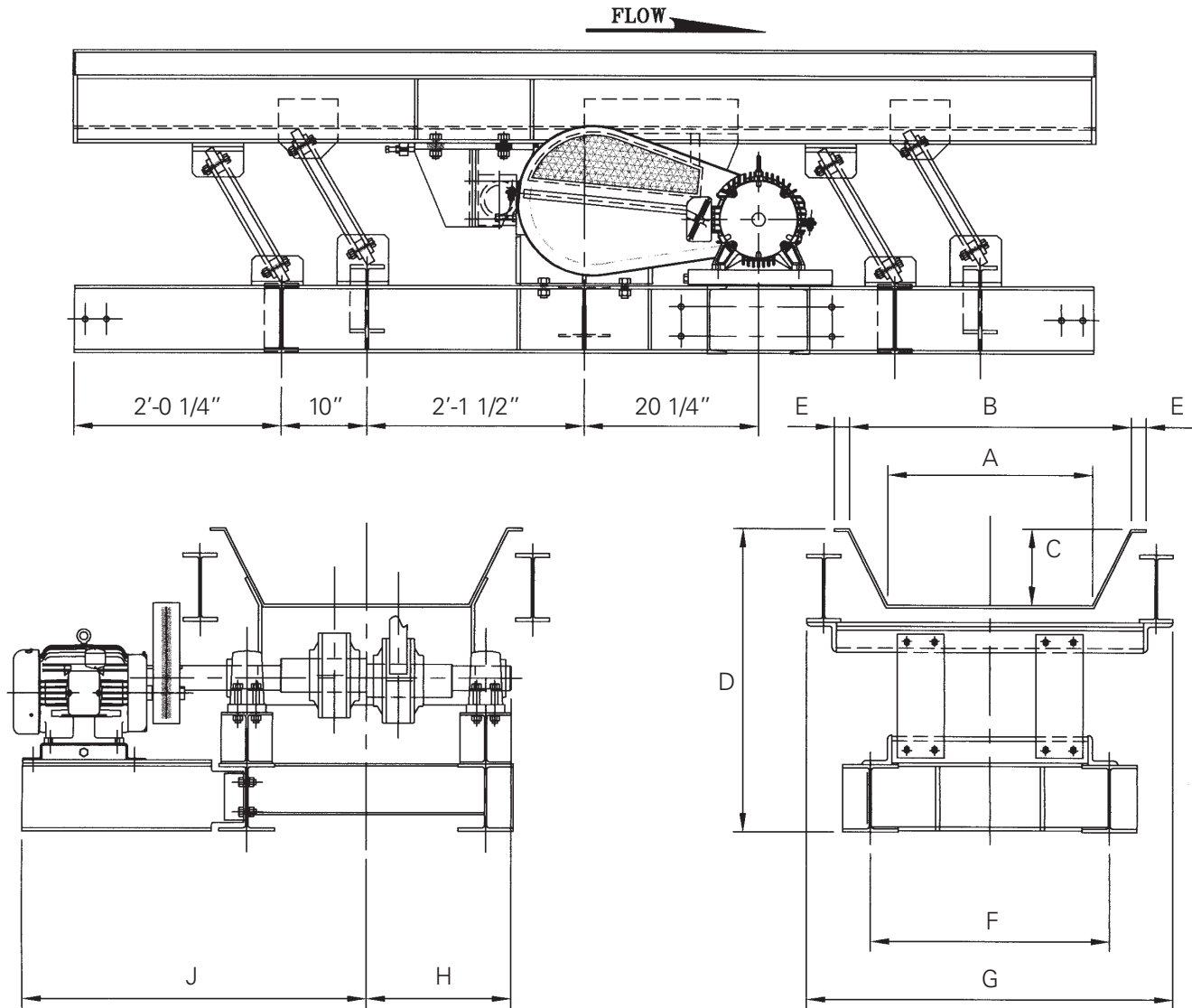
# BALANCED VIBRATING CONVEYOR



**progress industries inc.**

U.S. 11-Vann Rd. • PO. Box 29  
Trussville, AL 35173-0029  
205 655-8875 • fax 205 655-8884  
<http://www.progressindustries.com>

# SPECIFICATIONS



## DIMENSIONS (inches)

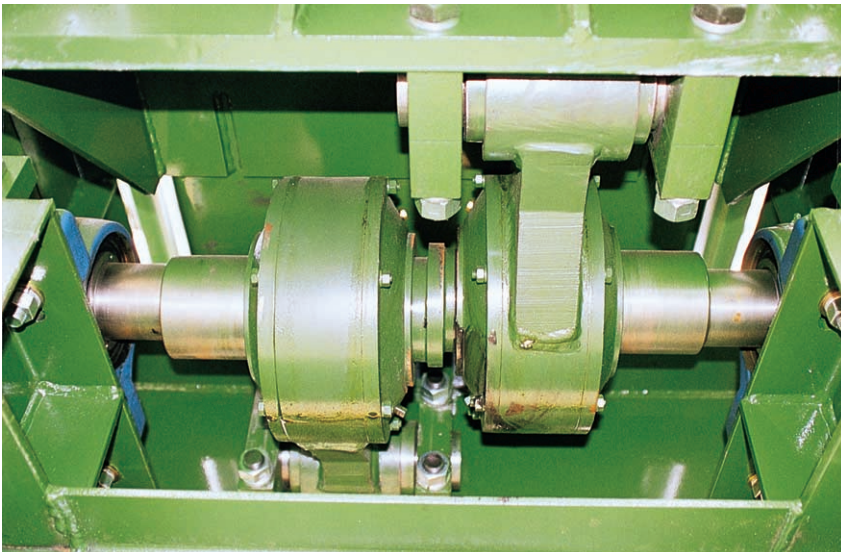
Model	A	B	C	D	E	F	G	H	J
1827	18	27	9	35 11/16	1 3/4	28	37	17	45 1/8
2433	24	33	9	35 3/4	1 3/4	28	43	17	45 1/8
2436	24	36	12	38 3/4	1 3/4	28	43	17	45 1/8

**Pans of other widths and depths are available.**

We reserve the right to modify our design without notice.

# VIBRATING CONVEYOR ADVANTAGES

- Moves high volumes of material with low horsepower requirements
- Levels and orients material as it is conveyed, reducing surges to downstream equipment
- They are built in 10 foot long sections which are bolted together to make up a conveyor of the required length. Odd length sections are available for use at the ends of the conveyor when the length is not a multiple of 10 feet.
- Counter balanced design provides an extremely smooth running conveyor with reduced foundation and support structure requirements.



## DRIVE

These drives are equipped with heavy duty spherical roller bearings on the eccentric shaft. A steel encased rubber bushing is at the pan end and counterweight end of the connecting rods. These rubber bushings reduce drive forces when starting and stopping, eliminating lubrication needs and reducing the noise level of the conveyor.



**progress industries inc.**

# BALANCED VIBRATING CONVEYOR



## ACCESSORIES

A wide range of accessory equipment is available for use with vibrating conveyors. Included are covers, feed inlets, bottom discharge sections, side or bottom discharge gates, compartmented pans, screen sections, steel liners for impact and rubber liners for noise reduction.

## HEAVY DUTY VIBRATING CONVEYOR

- Engineered primarily to feed trim blocks, sawdust, bark, edgings and slabs
- For applications where there is large amounts of sawdust or other material, a long double decker screen for size separation is available.
- The trough is supported by flat springs made of reinforced fiberglass. Power is supplied by electric motors. The eccentric drive and springs are tuned to establish a natural frequency for the conveyor thereby reducing horsepower requirements and stress on the structure.



## METAL DETECTION

A fiberglass section is bolted between the conveyor pans for placing a metal detector before the chipper, hog or other equipment it is feeding.