

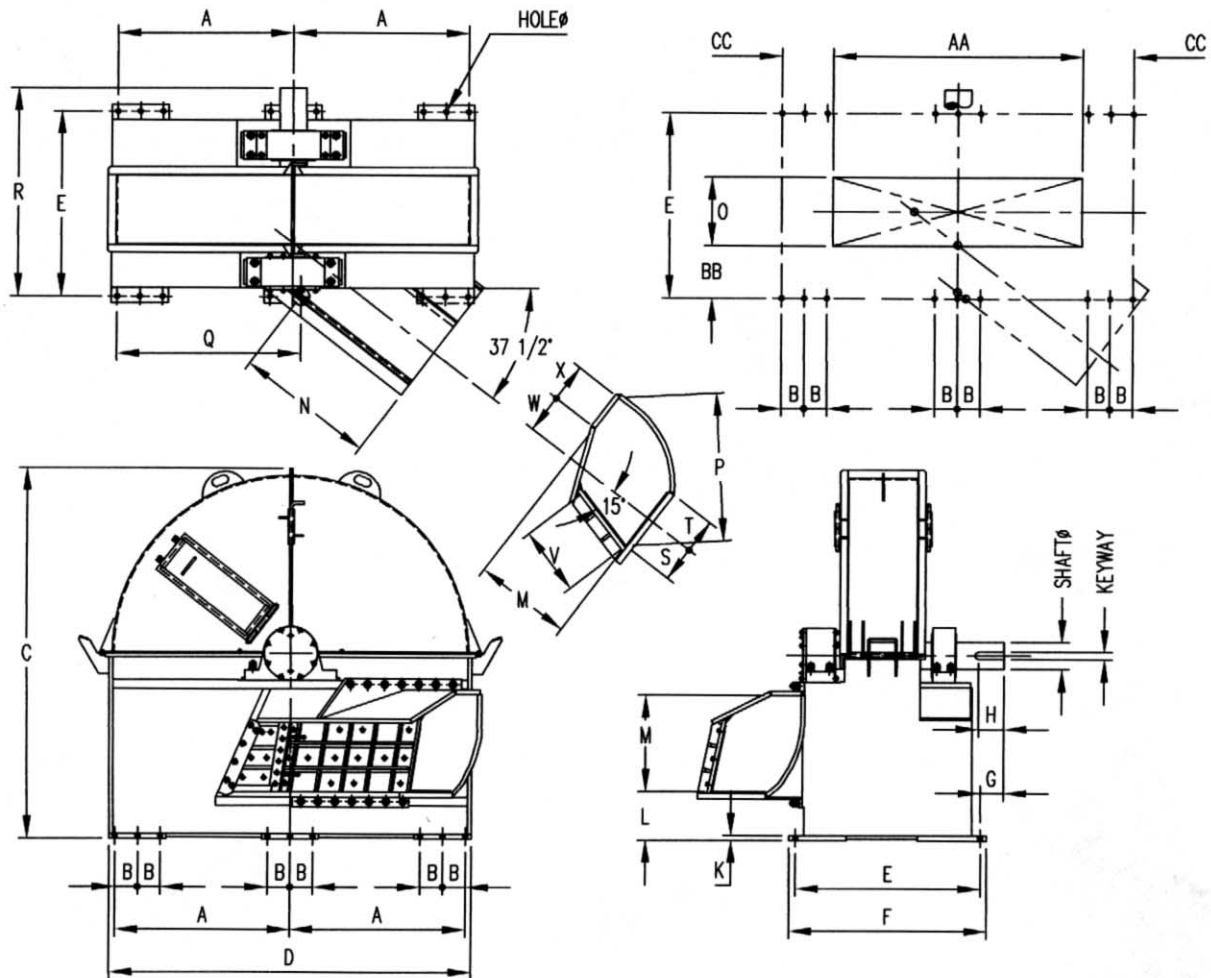
# CHIPPER



**progress industries inc.**

U.S. 11-Vann Rd. • P.O. Box 29  
Trussville, AL 35173-0029  
205 655-8875 • fax 205 655-8884  
<http://www.progressindustries.com>

# SPECIFICATIONS



## DIMENSIONS (inches)

size	A	B	C	D	E	F	G	H	J	K	L	M	N	O
76	40	8	86 1/4	84	40	44	13 13/16	9 1/4	45	1 1/2	15 11/16	21 1/2	36 3/8	18 1/2
84	44 1/8	8	96 3/8	92 1/4	53	57	9 3/16	6 1/2	48 1/2	1 1/2	14 7/8	22 5/8	40 13/16	22
96	50 1/8	10	107 3/4	104 1/4	55 1/2	59 1/2	9 1/8	6 1/2	54 1/2	1 1/2	15 7/16	26 3/8	44	22
104	55 1/4	8	117 5/8	114 1/2	65	69 1/2	8 1/4	9	59	1 3/4	15 3/4	29	47 5/8	24
116	61 3/4	8	130	127	65	69 1/2	8 1/4	9	65	1 3/4	17	33 7/8	49 1/8	24

size	P	Q	R	S	T	U	W	X	AA	BB	CC	HOLE	SHAFT	KEYWAY
76	34 9/16	40 1/2	53 13/16	9	9 5/8	19 7/8	4 3/8	7 5/8	60	11	10	1 3/8	5.187	1 1/4 x 5/8
84	36 1/2	46 13/16	62 3/16	9 5/8	9 1/8	21 7/16	4 13/16	13 11/16	64 1/4	14 1/2	12	1 5/8	5.437	1 1/4 x 5/8
96	44 1/4	53 11/16	64 5/8	10 11/16	9 11/16	23 13/16	9 5/16	12 5/16	76 1/4	16 3/8	12	1 5/8	5.937	1 1/2 x 3/4
104	46 13/16	61 9/16	73 1/4	11 3/8	11 5/16	25 1/8	11 7/8	13 1/2	74 1/4	18 1/2	18	1 5/8	9.500	2 1/2 x 1 1/4
116	52 1/8	64 11/16	73 1/4	12 3/8	12	26 13/16	13 11/16	13 1/2	87 1/2	18 1/2	18	1 5/8	9.500	2 1/2 x 1 1/4

We reserve the right to modify our design without notice.

# THE CHIPPER

Progress Industries introduces a chipper with a new concept design in chipping roundwood and slabs into more uniform chips. The chipper is constructed of extra heavy plate, welded and braced at all points of stress. The disc is of quality steel plate, stress relieved before machining and static balanced. Heavy duty spherical roller bearings with large reserve capacities are used throughout.

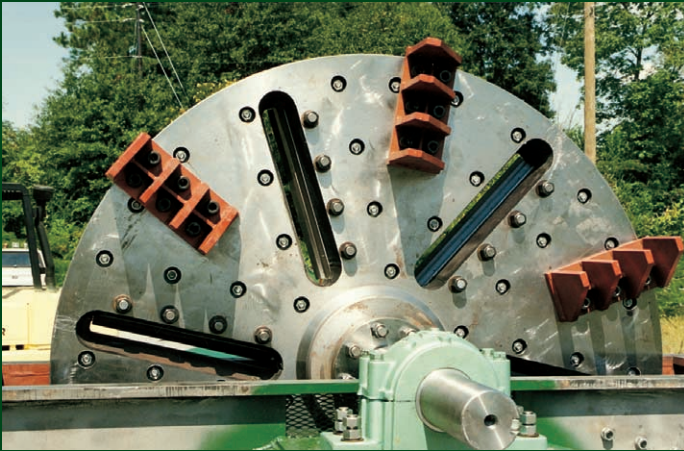


The chipper is available in 4, 6, 8, 10 or 12 knives for chip lengths 1/2" to 1", to meet customer's requirements. Discharges are also available in top, bottom, and side arrangement.



**progress industries inc.**

# CHIPPER



## REPLACEABLE WEAR PLATES

Replaceable wear plates at all points of greatest wear make service and maintenance of chippers easier, faster and less costly. Fan blades or cardbreakers are mounted on the back of the disc. Areas of replacement are:

- Spout side wear plate
- Disc face wear plate
- Spout bottom wear plate
- Base back wear plate
- Spout feedplate wear plate

## THE SPOUT

The Progress designed spout avoids the hang up of material entering because the size of the opening is the same throughout. This will give you more efficiency, consistent accuracy of chip dimension and greater capacity. For example, the 76" chipper will accommodate 21 1/2" roundwood while the 116" chipper will accommodate 30" roundwood.

## OPTIONS AVAILABLE:

1. Separate gravity type rechipper spout for oversize chips
2. Hydraulic operated quadrant opener
3. Electronic or caliper disc brake
4. Twin motor drive

