

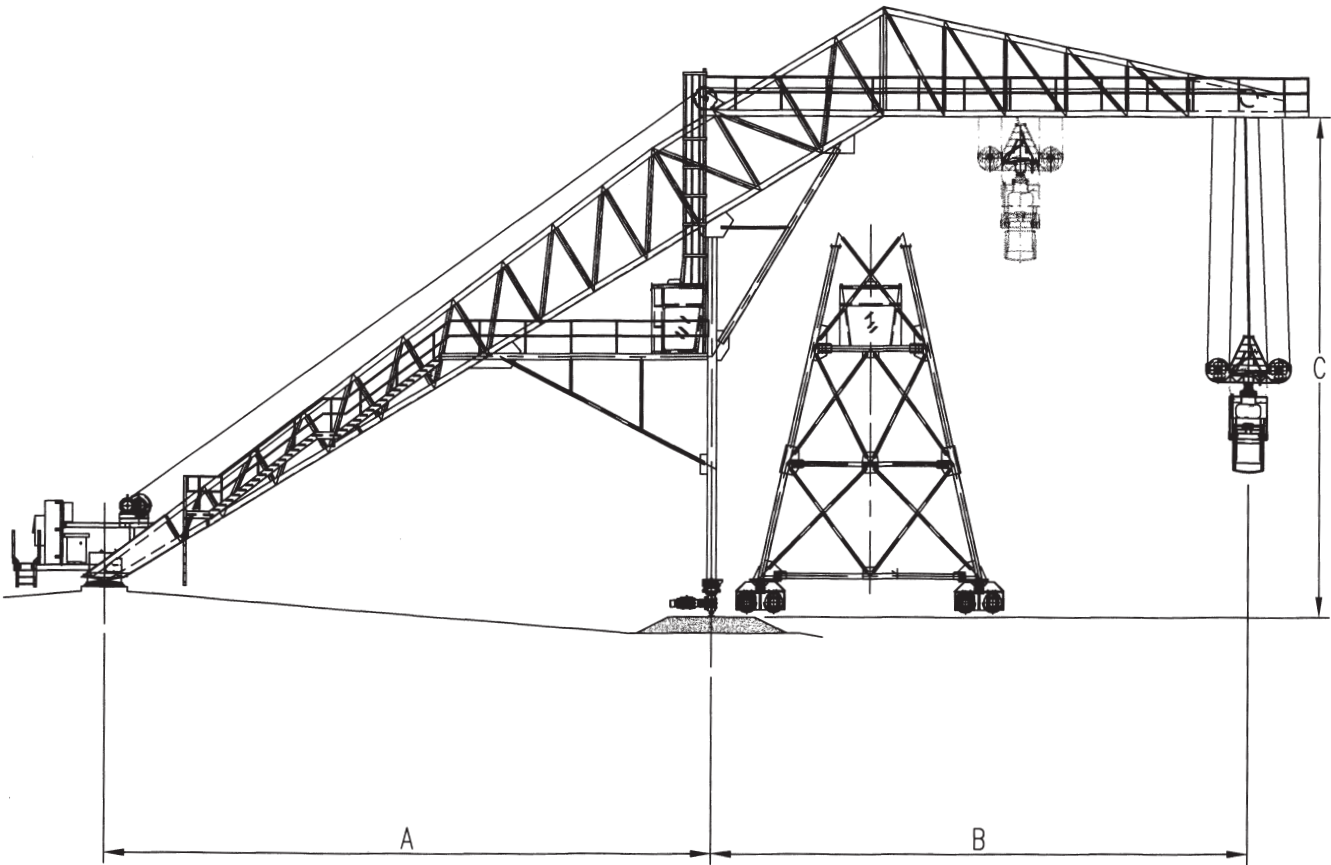
LOG CRANE



progress industries inc.

U.S. 11-Vann Rd. • P.O. Box 29
Trussville, AL 35173-0029
205 655-8875 • fax 205 655-8884
<http://www.progressindustries.com>

SPECIFICATIONS



DIMENSIONS (inches)

CRANE SIZE	75'	100'	125'	150'		175'
tons per lift (<i>gross</i>)	14	20	20	20	45	20
track radius (<i>A</i>)	25'	40'	65'	90'	90'	90'
grapple radius (<i>A+B</i>)	75'	100'	125'	150'	150'	175'
max. grapple elev. (<i>C</i>)	40'	54'	54'	65'	65'	65'
max. log height	29'	42'	42'	53'	42'	53'
grapple opening	10'-1"	10'-6"	10'-6"	10'-6"	12'-0"	10'-6"
max. storage (<i>cords</i>)	2,000	4,000	6,000	9,000	9,000	12,000

TRAVELING GRAPPLE OPTIONAL

We reserve the right to modify our design without notice.



LOG CRANE

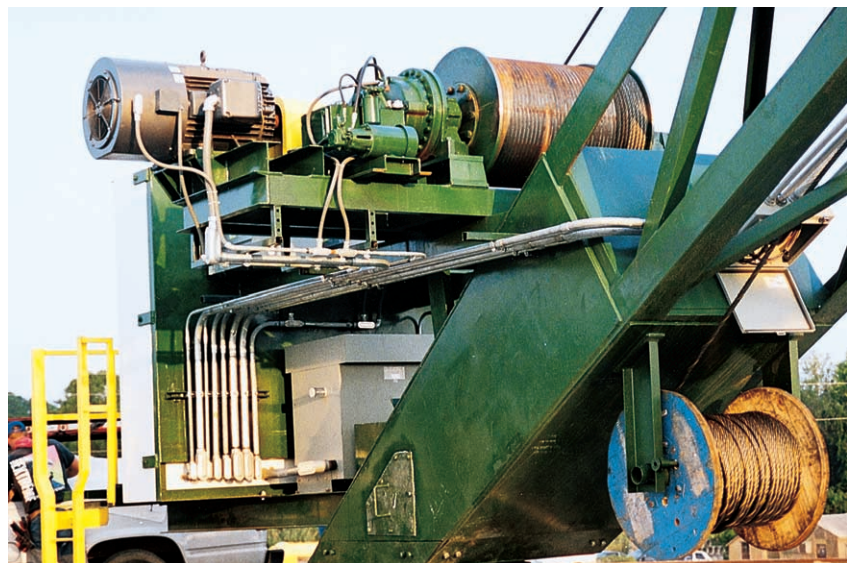
The Progress Log Crane is designed for off loading tree length logs from trucks into storage or long processing decks. One man performs the entire operation of controlling the log crane. The arched crane is fabricated of tubular and structural steel shapes with steel plate reinforcement at each end.

Log crane sizes range from 75' to 175' with 14 to 45 ton gross capacity.

Mercury vapor lights are mounted on the tip section for night-time operation.

WINCH ASSEMBLY

An electric hoisting winch, a weather proof electrical vector control panel and an electric power slip ring assembly are mounted on the crane at the pivot end.



progress industries inc.

LOG CRANE

Electric or Hydraulic



GRAPPLE

The Grapple is designed to handle the volume of logs rated by the size of the crane. A hydraulic unit is self-contained in the frame of the Grapple. A 270 degree rotating Grapple is also available.

TRUCK ASSEMBLY

One wheel on each truck assembly is driven by either an electric vector drive unit or hydraulic motor. The units are controlled by the joystick mounted on the control chair in the cab.

