

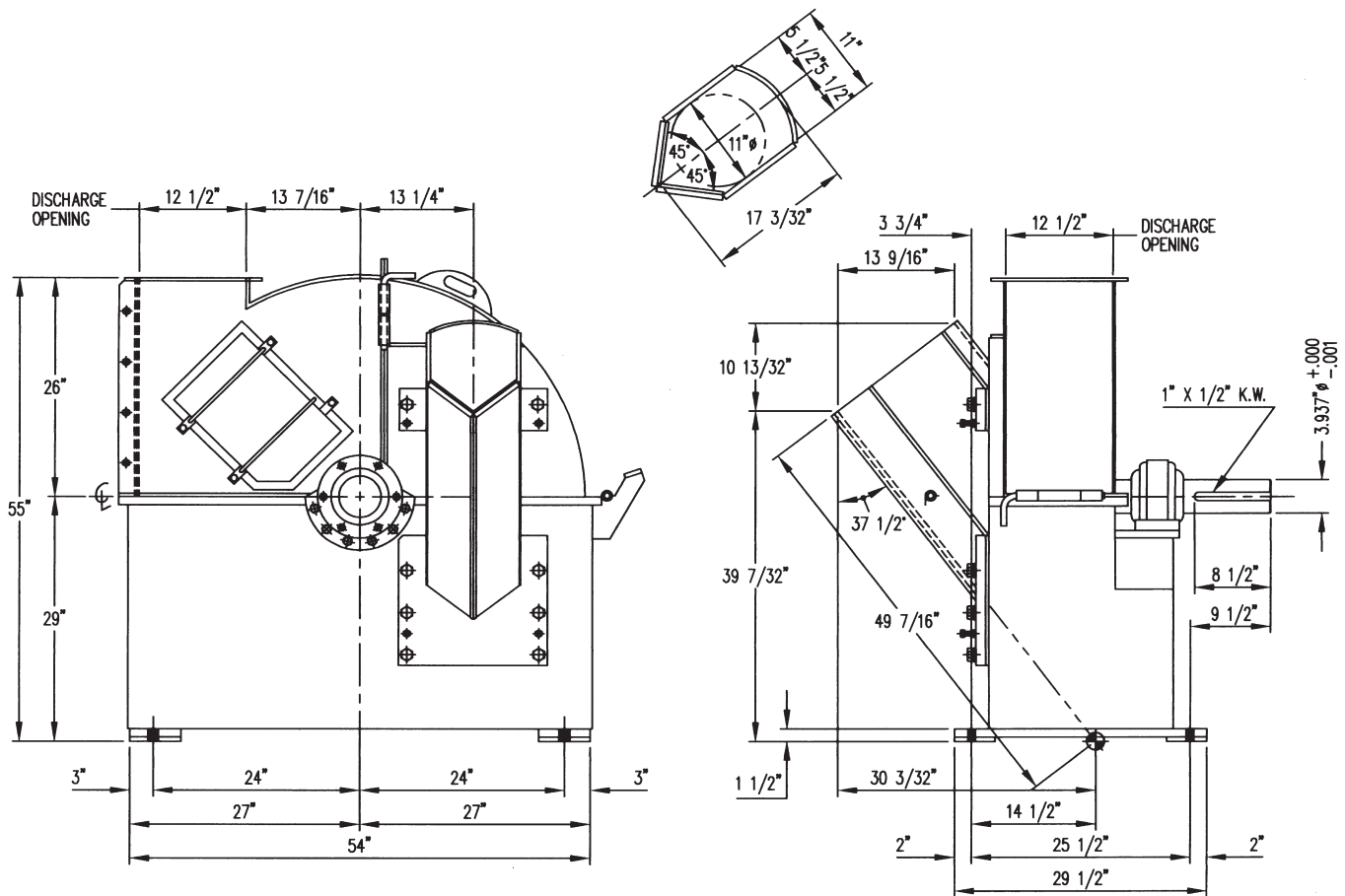
# RECHIPPER



**progress industries inc.**

U.S. 11-Vann Rd. • P.O. Box 29  
Trussville, AL 35173-0029  
205 655-8875 • fax 205 655-8884  
<http://www.progressindustries.com>

# SPECIFICATIONS



<b>SPOUT</b>	Consists of right and left hand replaceable wear plates and hardened surface anvils. 11" maximum round wood opening.
<b>DISC</b>	48" dia. 3-3/4" thickness at rim, 4-1/4" thickness including wear plate.
<b>SHAFT</b>	SAE 4150 Alloy Steel
<b>BRGS</b>	SKF Spherical Roller
<b>KNIVES</b>	4"x .375 x 14 3/4"; #T-18 or Equivalent
<b>WEIGHT</b>	Approximately 6000#

We reserve the right to modify our design without notice.

# THE RECHIPPER

The Progress 48" Rechipper is an improved concept design for chipping  
overs and small pieces to produce consistent accuracy of chip dimension.

The Rechipper is available in 4, 6 or 8 knives for chip lengths 1/2 " to 1,"  
to meet customer's requirements. Available in top or bottom discharge.



## KNIVES

The knife to anvil clearance need only be adjusted when changing chip length.

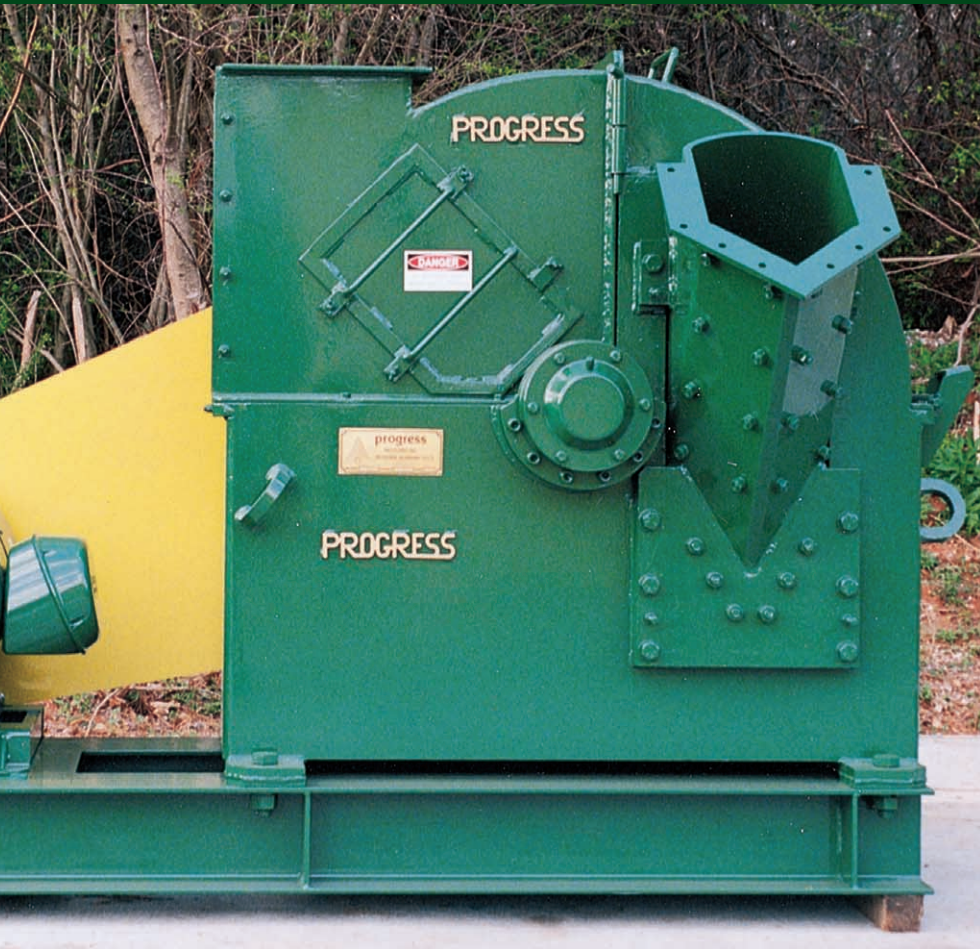
Replaceable wear plates on the disc face are simple and cost effective.

Knives are babbitted to a single fixed width after resharpening.



**progress industries inc.**

# RECHIPPER



## INFEED

Pieces are gravity fed into the rechipper's specially designed infeed spout. Both hardwoods and softwoods are easily processed. The vee-spout design allows material to orient itself for precise cutting action. Spout has replaceable wear plates and anvils.

