

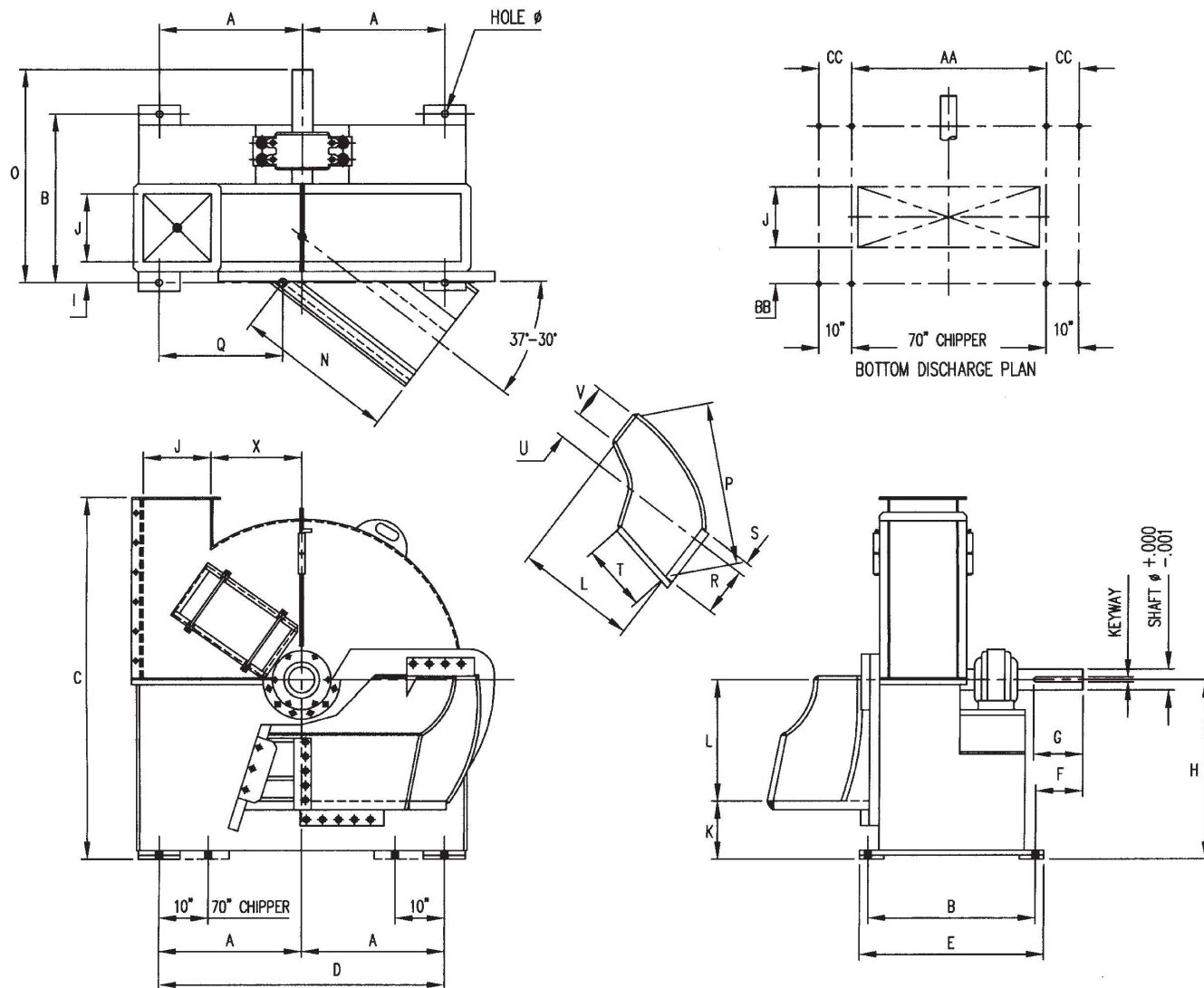
# WASTEWOOD CHIPPER



**progress industries inc.**

U.S. 11-Vann Rd. • P.O. Box 29  
Trussville, AL 35173-0029  
205 655-8875 • fax 205 655-8884  
<http://www.progressindustries.com>

# SPECIFICATIONS



## DIMENSIONS (inches)

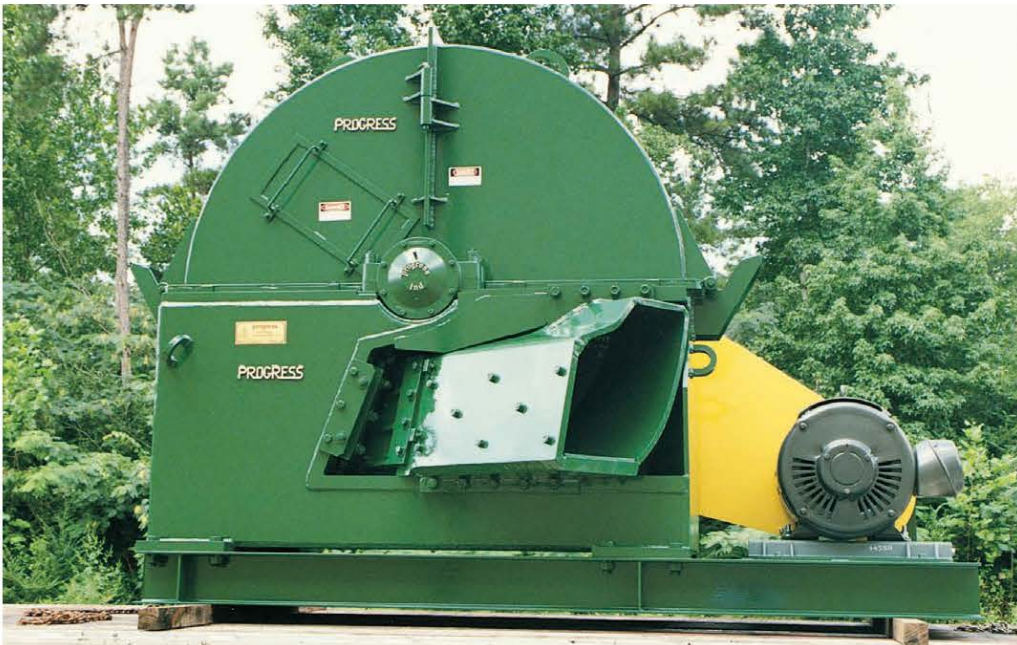
size	A	B	C	D	E	F	G	H	I	J	K	L	M	N	O
48"	24	25 1/2	55	54	29 1/2	9 1/2	8 1/2	29	3 3/4	12 1/2	9 3/4	18	1 1/2	25 1/2	35
60"	29	34 1/4	73	66 1/2	37 3/4	9	9	36	4 1/4	13 3/4	11 1/2	24 1/2	1 1/2	32 1/2	43 1/4
70"	39 3/4	48	85	83 1/2	52	10	10	42 1/2	11	18 1/2	14 1/16	22 15/16	1 1/2	30 3/16	57 1/4

size	P	Q	R	S	T	U	V	X	AA	BB	CC	HOLE	SHAFT	KEYWAY
48"	24 3/8	22 1/2	4 5/8	4 3/8	10 1/8	5 7/16	6 13/16	13 7/8	42	3 3/4	3	1 1/4	3.937	1 x 1/2
60"	33 1/4	25 1/8	6 1/4	6	13 9/16	9 3/16	6 5/8	18 1/2	49 1/2	4 1/4	4 1/4	1 3/8	4.187	1 x 1/2
70"	34 5/8	41 13/16	7 5/16	7 5/16	16	12 3/16	10 5/8	21 9/16	55 1/2	11	12	1 3/8	4.937	1 1/4 x 5/8

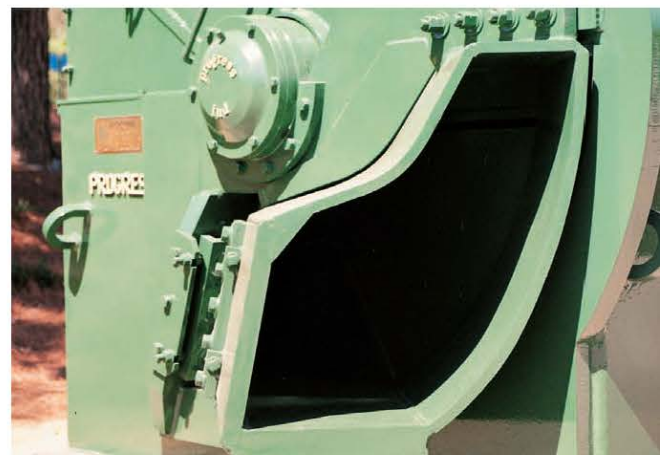
We reserve the right to modify our design without notice.

# THE CHIPPER

Progress Industries introduces a chipper with a new concept design in chipping roundwood and slabs into more uniform chips. The chipper is constructed of extra heavy plate, welded and braced at all points of stress. The disc is of quality steel plate, stress relieved before machining and static balanced. Heavy duty spherical roller bearings with large reserve capacities are used throughout.



The chipper is available in 4, 6 or 8 knives for chip lengths 1/2" to 1", to meet customer's requirements. Discharges are also available in top, bottom, side and back arrangement.



# CHIPPER

## REPLACEABLE WEAR PLATES

Replaceable wear plates at all points of greatest wear make service and maintenance of chippers easier, faster and less costly. Fan blades or cardbreakers are mounted on the back of the disc.



## SWEPT-BACK DESIGN

Because the chipper knives are offset from a radial line, they produce a swept-back angle. This swept-back design imparts a continuous chopping action which pulls the material through the knives at a uniform rate. The resulting chips are chopped into a uniform length with clean, unbruised edges. Knife changes and anvil adjustments are fast, accurate and easy. No guesswork is involved. Knives, after grinding, are gauge-set as a bench operation and can be quickly inserted in the disc without further adjustment. The anvil is provided with four working faces for longer service. Chip length can be adjusted in the field without difficulty.

## SPOUT

The Progress designed spout avoids the hang up of material entering because the size of the opening is the same throughout. This will give you more efficiency, consistent accuracy of chip dimension and greater capacity. For example; The 48" chipper will accommodate a 24" slab and 12" roundwood. The 60" chipper a 33" slab and 15 3/8" roundwood and the 70" chipper a 34 1/2" slab and 18" roundwood.

