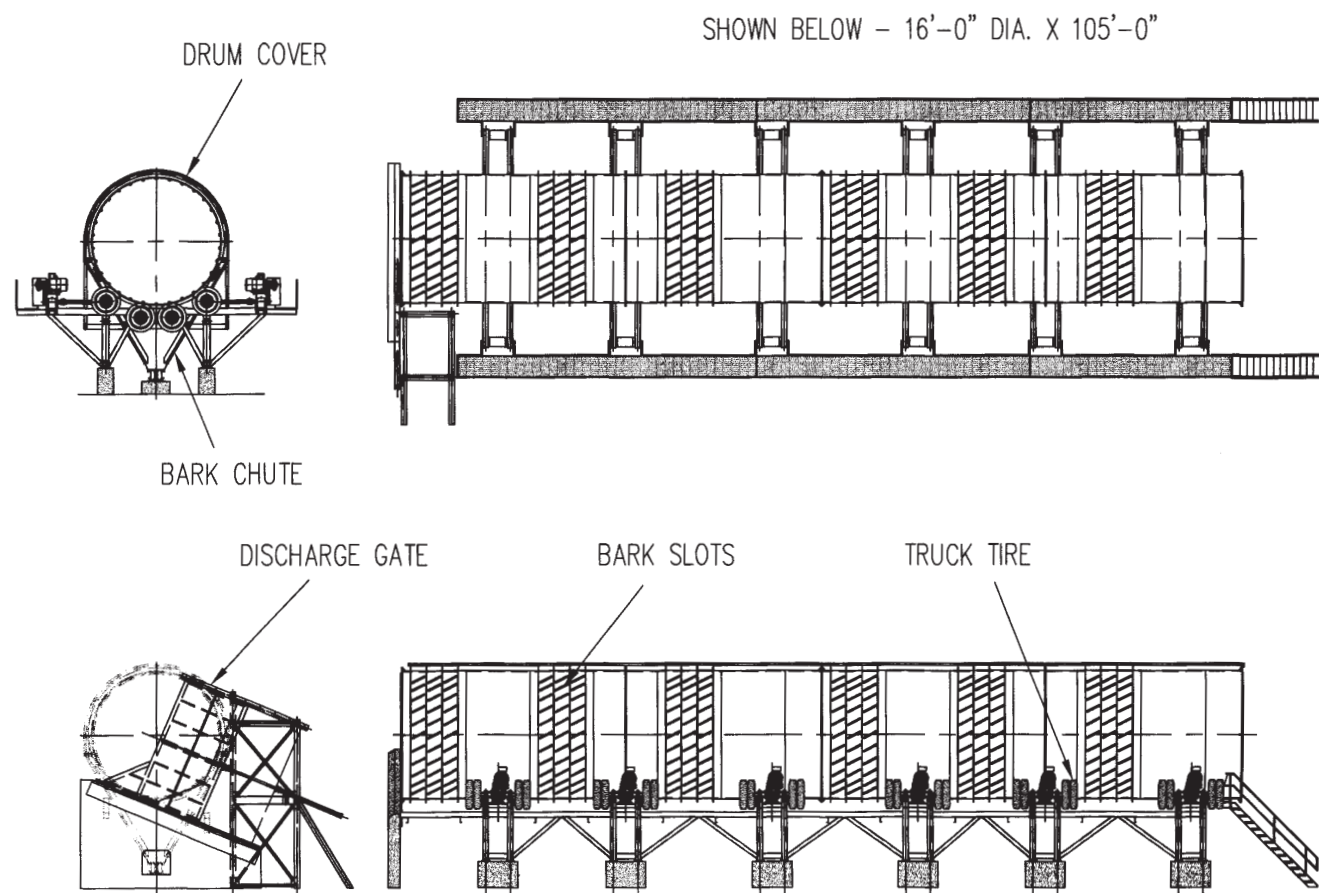


SPECIFICATIONS



DIMENSIONS (inches)

DEBARKING CONDITIONS		DRUM SIZE <i>cap.cords / hr</i>		
		7x40	9x60	11x90
SUMMER				
<i>softwoods</i>	85% debarked	31	54	120
	95% debarked	25	42	97
<i>hardwoods</i>	85% debarked	24	48	97
	95% debarked	17	36	82
WINTER (unfrozen)				
<i>softwoods</i>	85% debarked	25	41	94
	95% debarked	20	31	75
<i>hardwoods</i>	85% debarked	20	36	90
	95% debarked	14	26	67
WINTER (frozen)				
<i>softwoods</i>	85% debarked	17	30	67
	95% debarked	14	24	52
<i>hardwoods</i>	85% debarked	14	26	60
	95% debarked	11	20	45

NOTE:

Rates are for 100% operating time with drum operating under optimum conditions.

Debarking rates in cords per hour.

CORD = 2 1/2 tons

Very difficult to drum debark species such as birch, hickory and frozen aspen are excluded from these rates.

We reserve the right to modify our design without notice.

*Additional sizes available upon request

DRUM DEBARKER



progress industries inc.

U.S. 11-Vann Rd. • P.O. Box 29
Trussville, AL 35173-0029
205 655-8875 • fax 205 655-8884
<http://www.progressindustries.com>

DRUM DEBARKER



SHOWN: 16'-0" I.D. x 105'

DRUM DEBARKER

The Progress Drum Debarker is designed to handle several logs at one time to provide a high volume debarking capability compared to the traditional one log debarking process.

The drum is supported and rotated by sets of tires to assure a smooth and low cost operation. The drum debarker operates on a fixed speed hydraulic or electric drive with hydraulic coupling which gives a smooth control of drum start-up. Sizes range from 7' to 16' in diameter with overall debarker lengths up to 120 feet.



POWERFEED CONVEYOR

Designed chain conveyor to directly shoot logs into drum debarker, reduces height requirements allowing ease of loading with front end loaders.



CHUTE INFEED

Manufactured from 1" to 1 1/4" A 36 plate depending on size and volume. Gravity fed eliminating any commercial or movable maintenance parts. Because of the chute's height, it must be fed by a log crane.

GATE

A gate is mounted at the end of the drum which opens and closes by a hydraulic cylinder. The gate is designed to hold the logs inside the drum for a longer period, if needed, to remove the bark.

