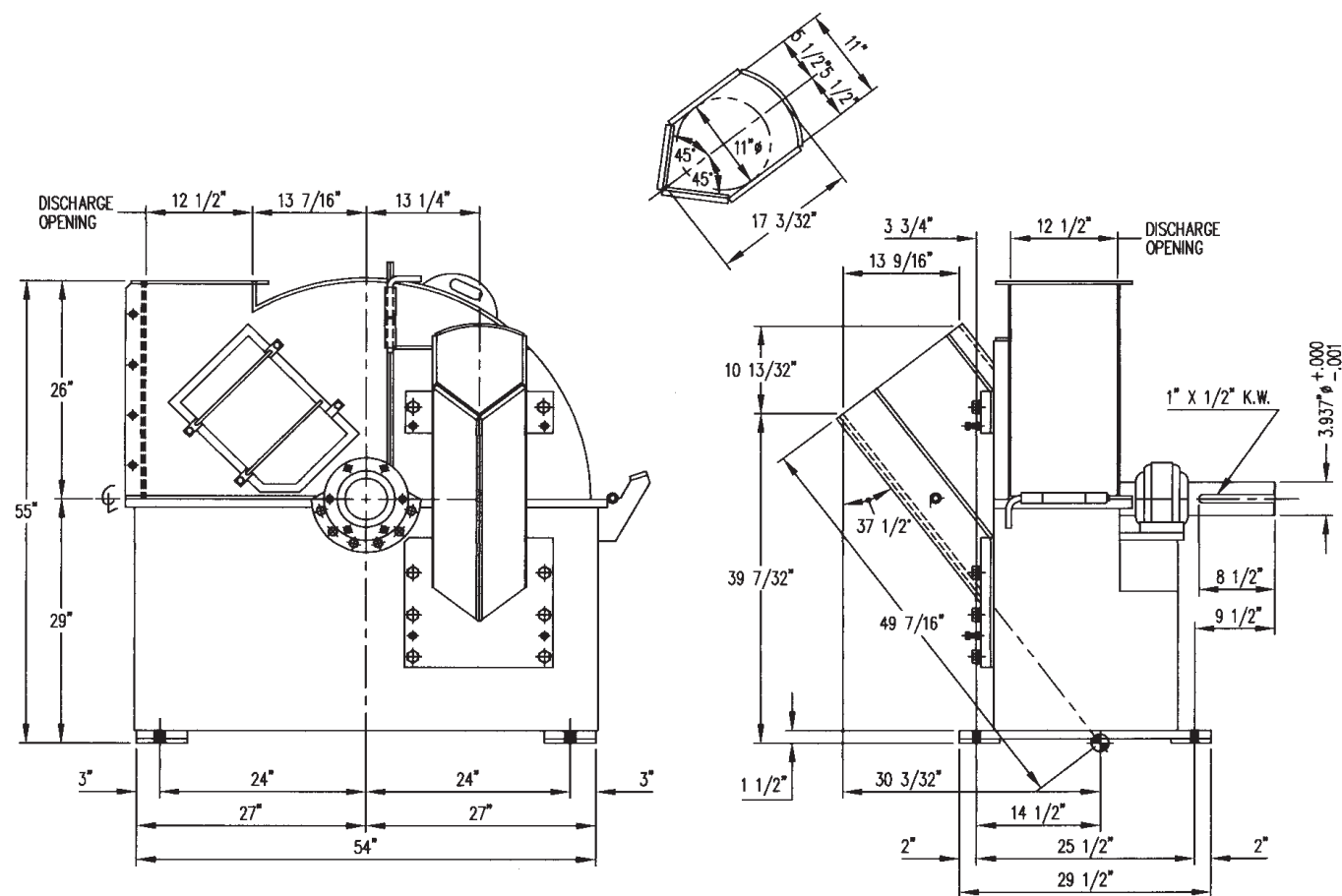


SPECIFICATIONS



SPOUT	Consists of right and left hand replaceable wear plates and hardened surface anvils. 11" maximum round wood opening.
DISC	48" dia. 3-3/4" thickness at rim, 4-1/4" thickness including wear plate.
SHAFT	SAE 4150 Alloy Steel
BRGS	SKF Spherical Roller
KNIVES	4"x .375 x 14 3/4"; #T-18 or Equivalent
WEIGHT	Approximately 6000#

We reserve the right to modify our design without notice.

RECHIPPER



 **progress industries inc.**

U.S. 11-Vann Rd. • P.O. Box 29
 Trussville, AL 35173-0029
 205 655-8875 • fax 205 655-8884
<http://www.progressindustries.com>

RECHIPPER

THE RECHIPPER

The Progress 48" Rechipper is an improved concept design for chipping
overs and small pieces to produce consistent accuracy of chip dimension.
The Rechipper is available in 4, 6 or 8 knives for chip lengths 1/2 " to 1,"
to meet customer's requirements. Available in top or bottom discharge.



KNIVES

The knife to anvil clearance need only be adjusted when changing chip length.
Replaceable wear plates on the disc face are simple and cost effective.
Knives are babbitted to a single fixed width after resharpening.

INFEEED

Pieces are gravity fed into the rechipper's specially designed
infeed spout. Both hardwoods and softwoods are easily
processed. The vee-spout design allows material to orient
itself for precise cutting action. Spout has replaceable wear
plates and anvils.

